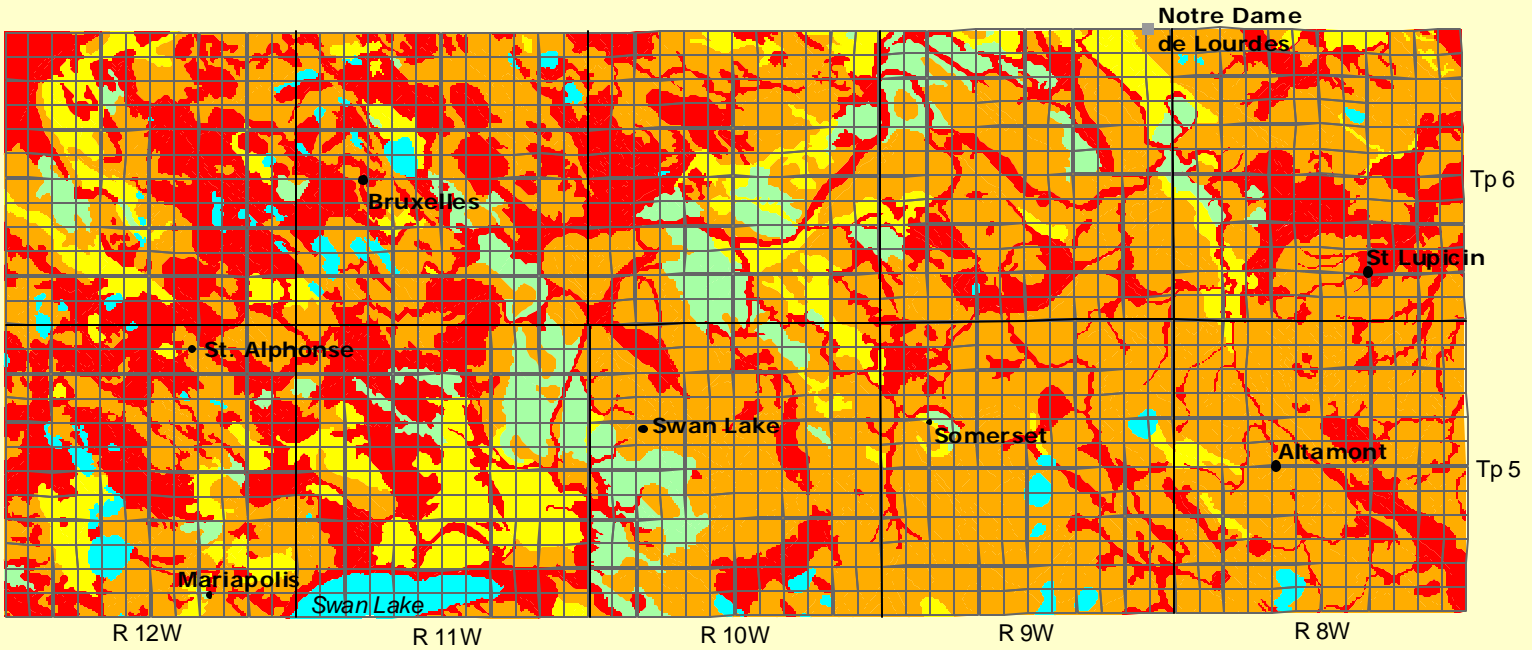

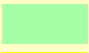







Rural Municipality of Lorne

Soil Suitability for Irrigated Potato Production



Soil Suitability Classes for Irrigated Potato Production

		Area (ha)	% of RM
	Class 1	-	-
	Class 2	5947	6.1
	Class 3	8497	8.7
	Class 4	49234	50.4
	Class 5	31148	31.9
	water		
	unclassified		

Universal Transverse Mercator (NAD27) Projection
Derived from Detail Soil Information (1:50 000)

Agricultural Resources Section
Soils and Crops Branch
Manitoba Agriculture and Food

subject to revision